

Component Replacement

- electrical -



Xperia™ XZs

G8231, G8232 (Dual SIM)

CONTENTS

1	Replaceable Components	3
2	Tool 6	
3	Component Placing.....	8
4	Additional Repair Info	10
5	Revision History	12

For general information about electrical repair related issues, refer to 1220-1336: Generic Repair Manual - electrical

Baking prior to repair is required, if the board have been exposed to air more than 12 hours from PWB package opening. Too long exposure time increase the level of moisture in PWB and the PWB could delaminate during repair process and result in direct or latent failures and reduce reliability.

The boards shall be baked in 125°C ±5°C for 4 hours.

Test after electrical replacement: refer to 1273-1772 Mechanical Test Instruction

All Electrical components are RLC level C, Reversed Logistic Classification, See the Spare Part Handling chapter in Mechanical/Generic Repair Manual 1220-1333.

Do not remove shield can lids (Heat pasta are added and RF performance will be damaged)

1 Replaceable Components

EXPLANATION OF ABBREVIATIONS USED IN THE COLUMN 'COMMENTS' BELOW

REPAIR METHOD

HA = Hot Air (removal & mounting)

ST = Soldering Tool (removal & mounting)

HA/ST = Hot Air for removal - Soldering Tool for mounting

BGA = BGA Station

BH = Bottom Heater

ADDITIONAL INFORMATION

⇒1 (2, 3, 4, etc.) = Proceed to 'Additional Repair Info' for further instructions in the indicated section(s).

Primary Side

Position	Component	Part no.	Comments
CN4000	Card Conn SIM Tray	1299-2861	HA+BH or BGA → 1
CN8000	Conn Leaf Spring Plug 1p WH : 0.8+-0.2	1294-8905	HA+BH → 2
CN8001	Conn Leaf Spring Plug 1p WH : 0.8+-0.2	1294-8905	HA+BH → 3
CN8650	Conn Leaf Spring Plug 1p	1297-5833	HA+BH → 4
CN8651	Conn Leaf Spring Plug 1p	1297-5833	HA+BH → 5

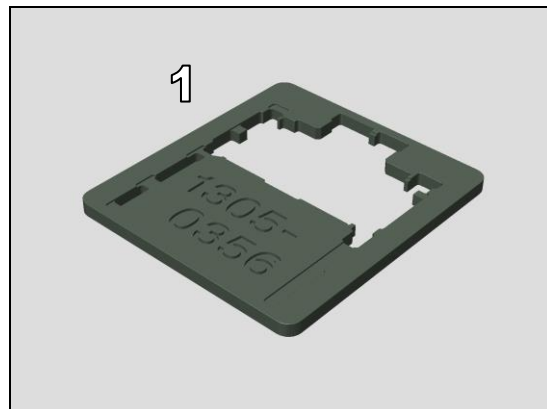
Secondary Side

Position	Component	Part no.	Comments
CN4824	Conn Leaf Spring Plug 1p	1297-5833	HA+BH → 1
CN4848	Conn Leaf Spring Plug 1p WH : 0.8+-0.2	1294-8905	HA+BH → 2

2 Tool

SPECIAL TOOL

1. PBA Soldering Fixture (1305-0356)



STANDARD TOOLS

1. Small Convection (Hot Air) Device



2. Soldering Iron



3. Soldering wick



4. Solder-wire



5. Solder-paste



6. Low Static Heat Protection Tape



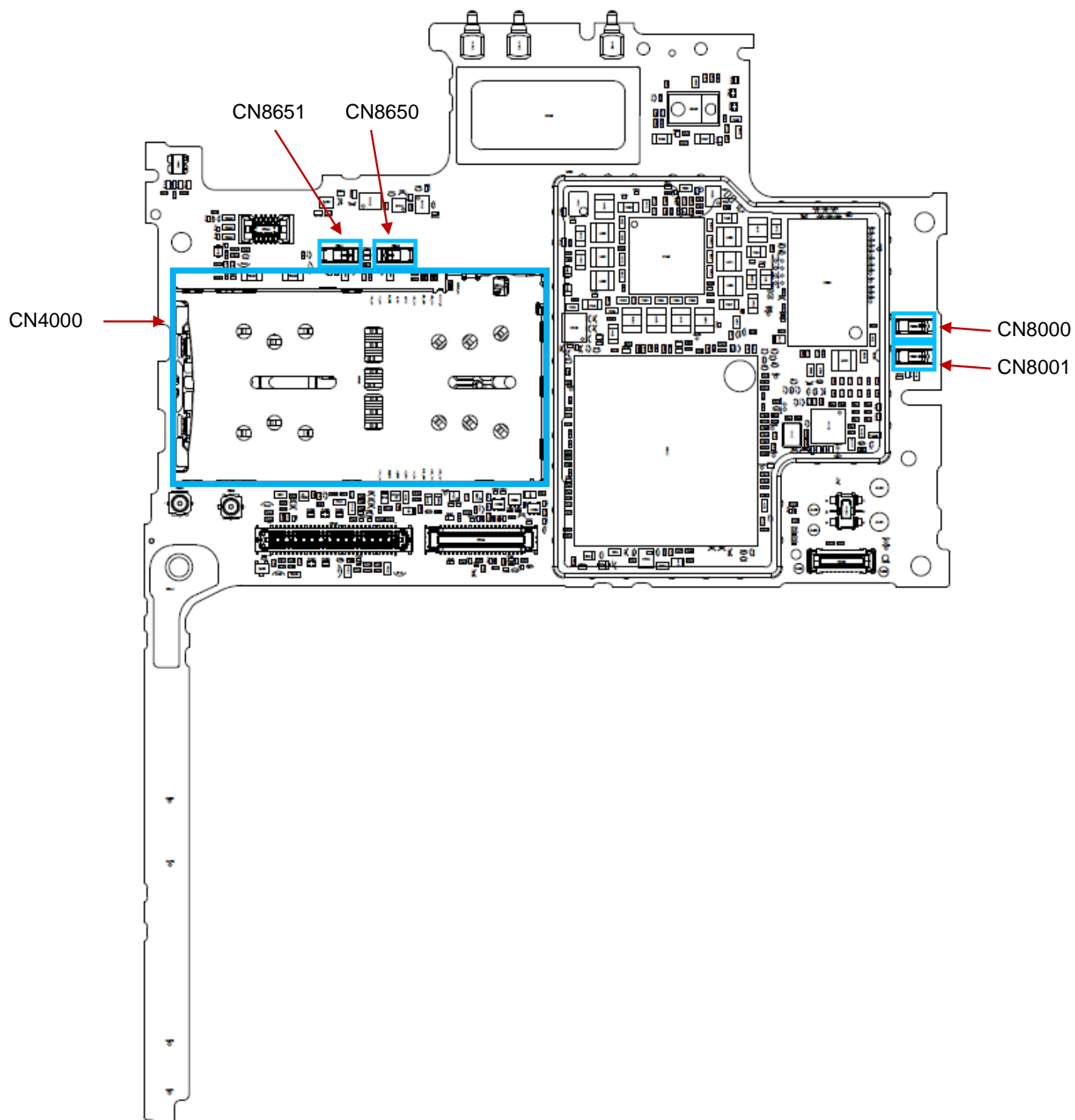
7. Flux



Refer to the 1003-9107 Tools Catalogue for detail of standard tools.

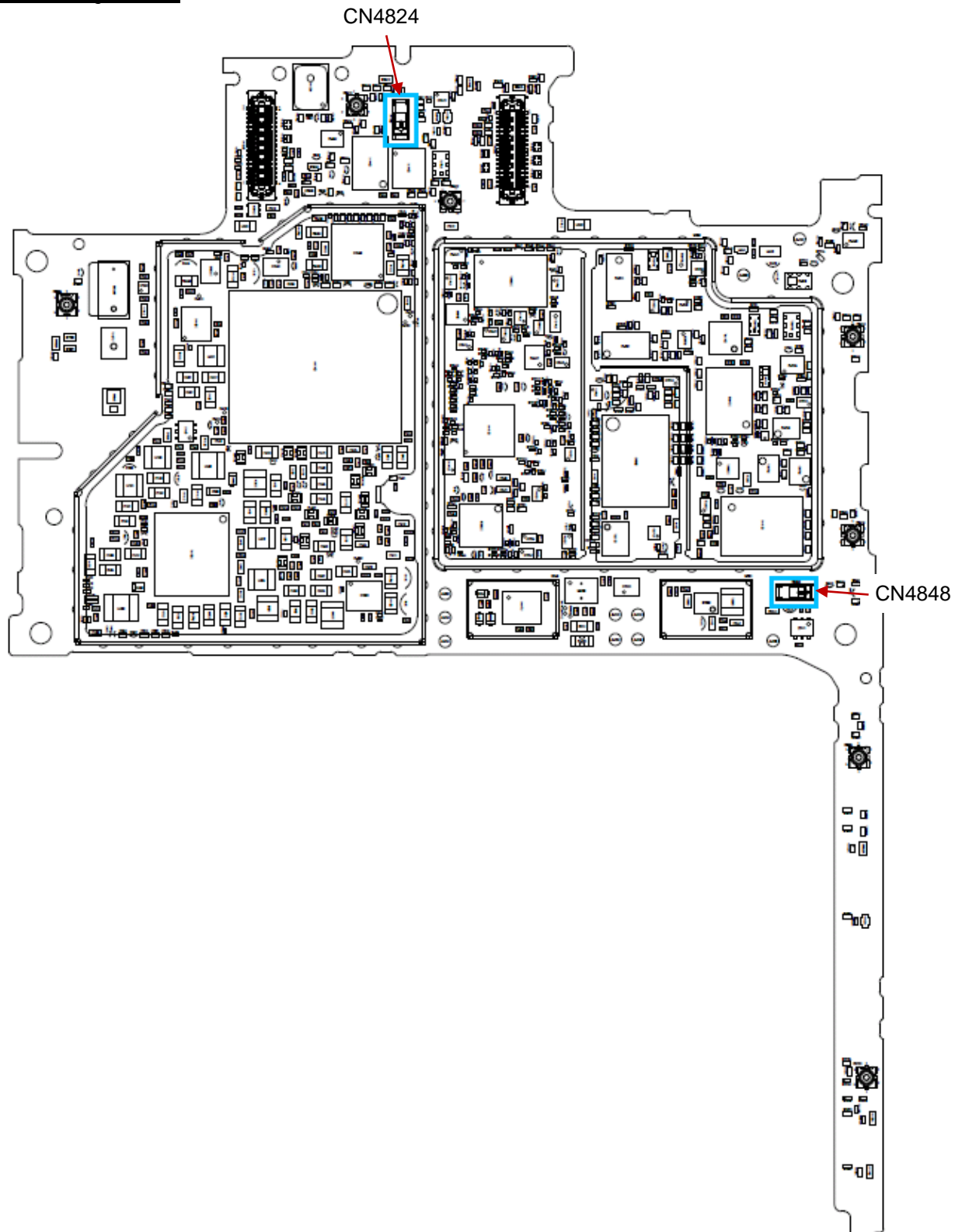
3 Component Placing

Primary Side



Component Placing

Secondary Side



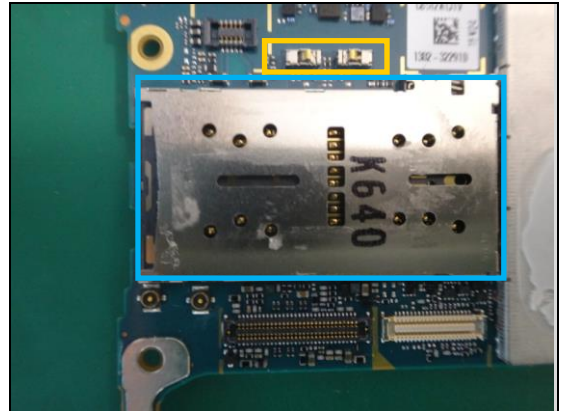
4 Additional Repair Info

Primary Side 1

CN4000

Replace if mechanical damaged (No network, restart, No SIM card is detected, no SD card is detected, can't insert Cap Tray Assy)

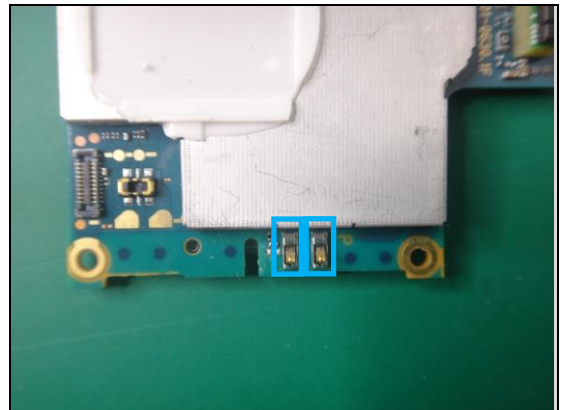
Protect the spring pin with capton tape!



Primary Side 2

CN8000,CN8001

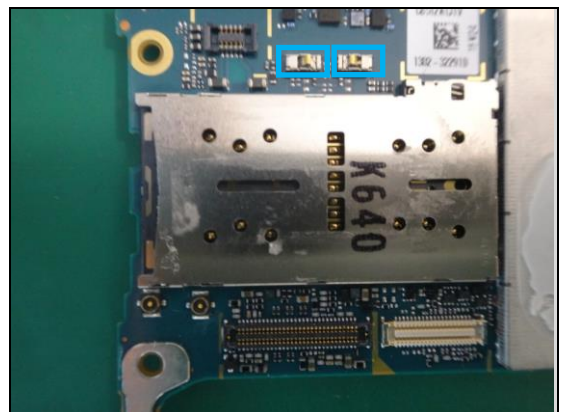
Replace if mechanical damaged (No or bad network, antenna).



Primary Side 3

CN8650, CN8651

Replace if mechanical damaged (No or bad network, antenna).

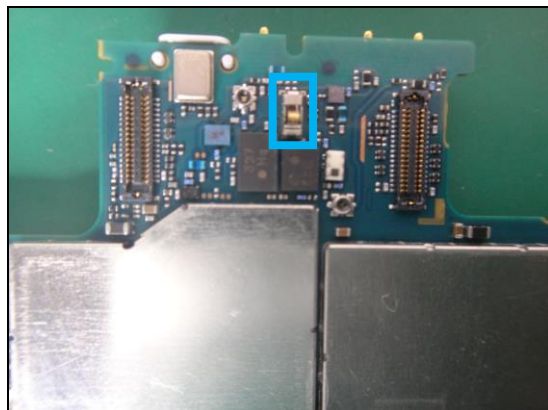


Additional Repair Info

Secondary Side 1

CN4824

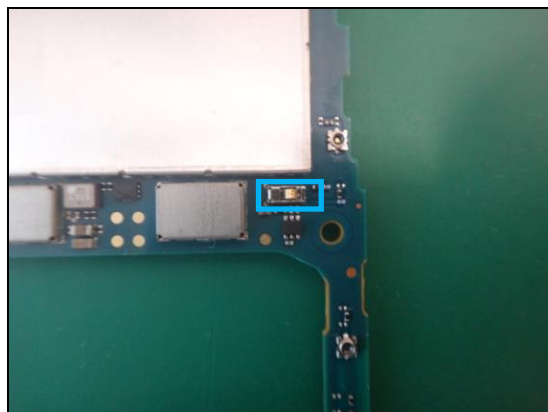
Replace if mechanical damaged (No or bad network, antenna).



Secondary Side 2

CN4848

Replace if mechanical damaged (No or bad network, antenna).



5 Revision History

Rev.	Date	Changes / Comments
1	2017-Mar-17	Initial release